



**TM LASK ENTERPRISES LTD.**

**OEM DISTRIBUTOR OF THE**

**WRI & WCR**

**CRIMPERS AND PARTS**

**PHONE & FAX: 1-604-592-9198**

**CELL: 1-604-802-9473 OR 1-778-878-7399**

**EMAIL: [tmlask@telus.net](mailto:tmlask@telus.net)**



# **TM LASK ENTERPRISES LTD.**

## **LOG BUNDLING PROCEDURE**

- A. Always load strand into reel-less dispenser so that inside lead end of strand pulls from center, in a counter-clockwise position. If using wooden reels, make sure that the strand dispenses from the top of the reel in the reel dispenser.**
  
- B. Try to rotate strand as it dispenses from the reel-less dispenser, thus, removing as much torque as possible before throwing strand over load.**
  
- C. Pre-feed aluminum seals onto strand prior to throwing over load. When strand is fed back to Banderman by Driver, push lead end through seal 8 to 10 inches and put a slight bend in strand to prevent it from slipping out of the seal – pull slack back through until desired tension is achieved.**
  
- D. Place hydraulic or air crimper over seal starting at either top or bottom of seal and crimp from one end through to other end of seal. IMPORTANT: Do not crimp on both ends and then try to crimp in center of seal, as this will not work, because aluminum will not be able to flow.**
  
- E. After crimping has been completed, turn crimper sideways, hooking cutter over strand and cut as near to seal as possible, thus, eliminating excess waste.**

# TM LASK ENTERPRISES LTD.

## LOG BUNDLING STRAND

### 1 X 7 GALVANIZED OR BRIGHT

DIAMETER INCHES	REEL DIAMETER INCHES	REEL LENGTH FEET	BREAKING STRENGTH LBS.	GROSS WEIGHT LBS.
¼"	28"	5,000	8,500	649
17/64"	28"	4,111	10,000	597
17/64"	REEL-LESS	12,333	10,000	1,791
5/16"	35"	6,000	14,000	1,337
5/16"	REEL-LESS	8,000	14,000	1,783
5/16" HT	35"	6,000	18,000	1,337
5/16" HT	REEL-LESS	8,000	18,000	1,783
3/8"	35"	5,000	18,000	1,350
3/8"	REEL-LESS	6,250	18,000	1,688

# TM LASK ENTERPRISES LTD.

## ALUMINUM SLEEVES

SIZE	SEALS/BAG	RECOMMENDATIONS FOR MAXIMUM EFFICIENCY	CRIMP DIAMETER		PSI LOW
			MIN.	MAX.	
¼" X 4 ½"	600	1 SEAL PER LINE 4 DOUBLE CRIMPS	.574"	.594"	125
17/64" X 5- ½"	600	5 DOUBLE CRIMPS	.634"	.654"	125
17/64" X 7"	300	8 SINGLE CRIMPS	.670"	.690"	125
17/64" WR		DOUBLE CRIMP	.670"	.690"	125
5/16" X 6 -½"	250	1 SEAL PER LINE 6 DOUBLE CRIMPS	.675"	.695"	135
3/8" X 5"	250	2 SEALS PER LINE 5 SINGLE CRIMPS EACH SLEEVE	.790"	.810"	ALU 140 ROTO 150
3/8" X 6"	200	NOT RECOMMENDED FOR MAXIMUM EFFICIENCY			
3/8" X 7"	150	NOT RECOMMENDED FOR MAXIMUM EFFICIENCY			
3/8" X 7 ½"	150	1 SEAL PER LINE 10 SINGLE CRIMPS	.790"	.810"	ALU 140 ROTO 150
3/8" X 7-1/2" WR	150	1 SEAL PER LINE 10 SINGLE CRIMPS	.800"	.820"	145



# TM LASK ENTERPRISES LTD.

## ALUMINUM SEALS

<u>SIZE</u>	<u>RECOMMENDATION FOR MAXIMUM EFFICIENCY</u>
1/4" x 4-1/2"	1 seal per line = 4 double crimps
17/64" x 4"	For recycle only
17/64" x 5-1/2"	1 seal per line = 5 double crimps
17/64" x 7"	1 seal per line = 8 single crimps
5/16" x 6-1/2"	1 seal per line = 6 double crimps
5/16" x 10"	1 seal per line = 10 double crimps
3/8" x 4"	For recycle only
3/8" x 5"	2 seals per line = 5 crimps each seal
3/8" x 6"	Not recommended for maximum efficiency
3/8" x 7"	Not recommended for maximum efficiency
3/8" x 7-1/2"	1 seal per line = 10 single crimps
3/8" x 8"	1 seal per line = 10 single crimps

# TM LASK ENTERPRISES LTD.

## CRIMPER WEIGHTS

<u>BRAND</u>	<u>SIZE</u>	<u>STYLE</u>	<u>WEIGHT</u>
WRI	17/64"(9/32")	AIR	31.25 LBS
WRI	5/16"	AIR	32.25 LBS
WRI	3/8" ROTO	AIR	39.5 LBS
WRI	3/8" ALUMINUM	AIR	31.6 LBS
WRI	17/64", 5/16", 3/8"	HYDRAULIC	25.4 LBS
(WCR)	17/64"(9/32")	AIR	31 LBS
(WCR)	3/8"	AIR	31 LBS
(WCR)	3/8"	HYDRAULIC	20.8 LBS

# TM LASK ENTERPRISES LTD.

## MANUFACTURES FACTORY SETTINGS

### AIR SYSTEM REQUIREMENTS

- 1) CFM 12
- 2) ½" HOSE MINIMUM
- 3) 100 GALLON TANK

<u>BRAND</u>	<u>SIZE</u>	<u>GAUGE PSI</u>
WRI	¼"	130 – 140
WRI	17/64"(9/32")	130 – 140
WRI	5/16"	140 – 150
WRI	3/8" ROTO	155 – 160
WRI	3/8" ALUMINUM	145 – 160
(WCR)	17/64"(9/32")	130 – 140
(WCR)	3/8"	145 – 150

### HYDRAULIC SYSTEM REQUIREMENTS

- 1) 2000 PSI PUMP
- 2) 4.77 GPM @ 3600 RPM
- 3) 8.5 - 11 HP HONDA GAS ENGINE

<u>BRAND</u>	<u>SIZE</u>	<u>GAUGE PSI</u>
WRI	¼"	1700 – 2000
WRI	17/64"(9/32")	1700 – 2000
WRI	5/16"	1700 – 2000
WRI	3/8"	1700 – 2000
(WCR)	17/64" (9/32")	2000 - 2300
(WCR)	3/8"	2000 – 2300

# **TM LASK ENTERPRISES LTD.**

## **RECOMMENDED CRIMPER MAINTENANCE PLAN** **TO HELP EXTEND CRIMPER LIFE AND** **PERFORMANCE**

- CLEAN, USING AIR GUN AND LUBRICATE MOVING PARTS DAILY
- REMOVE JAW BOLTS, CHECK FOR WEAR AND GREASE WEEKLY
- DISMANTLE TOP SIDEPLATE, REMOVE & CLEAN GREASE SLOT FOR CROSSHEAD BLOCK, CHECK FOR WEAR, REMOVE LINK PINS, CLEAN LINKS AND GREASE.
- MAKE SURE WHEN REPLACING ALL PARTS TO MAKE SURE THEY ALL HAVE GREASE ON THEM.
- MAKE SURE THAT THE JAW BOLTS ARE NOT TOO TIGHT TO PREVENT THE JAWS FROM CLOSING, ALSO MAKE SURE THAT THERE IS NO PLAY IN THE JAWS, IF SO CHECK BOLT HOLES, AND LINKS FOR WEAR, IF NECESSARY REPLACE PARTS SHOWING WEAR.
- AFTER RE-ASSEMBLING THE TOOL, MAKE SURE TO CHECK THE FINISHED CRIMP DIMENSIONS TO MAKE SURE THEY ARE WITHIN THE RECOMMENDED TOLERANCES SPECIFIED BY THE MANUFACTURE.
- IN DOING THE ABOVE, YOU SHOULD HAVE A TOOL WORKING PROPERLY AND KEEPING WITHIN THE RECOMMENDED CRIMP DIMENSIONS TO GIVE YOU THE PROPER HOLDING POWER NECESSARY TO KEEP BUNDLE SURVIVAL AT IT'S BEST.

03/30/03



# TM LASK ENTERPRISES LTD.

## CRIMPER PARTS TOLERANCES AS PER PAUL BRONG MACHINE WORKS

	LOOK FOR	NEW	WORN REPLACE
JAW BOLT	GROOVING		X
JAW BOLT HOLE IN SIDEPLATES	OVALIZED	.751"	.756"
JAW BOLT HOLE IN SIDEPLATES WCR	OVALIZED	.751"	.756"
JAW BOLT HOLE IN JAW	OVALIZED	.751"	.756"
JAW BOLT HOLE IN JAW WCR	OVALIZED	.751"	.756"
CYLINDER CONNECTOR SLOT IN SIDEPLATES	WEAR	.272"	.285"
CYLINDER CONNECTOR SLOT IN SIDEPLATES WCR`	WEAR	.380"	.392"
CYLINDER CONNECTOR	SLOT	.250"	.230"
CYLINDER CONNECTOR WCR	SLOT	.365"	.345"
<u>CHECK LINK PIN HOLE DIAMETERS</u>			
	3/8"	OVALIZED	.376"
	7/16"	OVALIZED	.438"
JAW BOLT WASHERS	4 pcs		
<u>URETHANE BLOCK MEASUREMENTS</u>			
9/32"(17/64") CRIMPER	CLUNKING	1.1875"	1.000"
5/16" CRIMPER	CLUNKING	1.1875"	1.000"
3/8" WCR STYLE CRIMPER	CLUNKING	1.4000"	1.2125"
3/8" WRI STYLE CRIMPER	CLUNKING	1.6250"	1.4375"
3/8" ALUMINUM POT CRIMPER	CLUNKING	1.6875"	1.5500"
<u>SPRING LENGTHS</u>			
9/32" CRIMPER	Slow Return	5.000"	3.500"
3/8" CRIMPER	Slow Return	8.875"	7.000"

# TM LASK ENTERPRISES LTD.

## CRIMPER REPAIRS

THESE ARE THE NORMAL CHANGE OUT PARTS DURING A  
ROUTINE REPAIR

### B120 5/16HYKIT (5/16-9/32 HD PNEU REPAIR KIT

- 2 CUTTER INSERTS
- 2 JAW BOLTS & NUTS
- 2 CONNECTING LINKS
- 4 DOWEL PINS
- NUT & BOLT KIT
- \*\*PUSH BUTTON AIR VALVE O-RING KIT
- \*\*QUICK EXHAUST DIAPHRAM
- \*\*AIR CHAMBER DIAPHRAM
- \*\*URETHANE BLOCK

\*\*AIR CRIMPER PARTS ONLY\*\*

ANY OTHER PARTS REPLACED WILL BE RETURNED  
FOR CUSTOMER INSPECTION.

# **TM LASK ENTERPRISES LTD.**

## **HYDRAULIC CRIMPER TROUBLE SHOOTING**

- a. If crimper fails to function:**
  - a.1) With crimper switch in ON position, check hydraulic pressure gauge to see if system pressure is at 1950 p.s.i.**
  - a.2) If system pressure is not at 1950 p.s.i. with crimper switch in ON position - check electrical supply from crimper to solenoid valve.**
  - a.3) If solenoid functions but pressure does not build up - check hydraulic fluid level.**
  - a.4) If items 1, 2, and 3 are functioning, check Quick Disconnect fittings -- ensuring that connectors are depressed fully before screwing on cap. This ensures hydraulic flow to crimpers.**
  - a.5) If electrical switch in ON or OFF position and solenoid is not functioning -- check all wiring connections (switch, connector plugs, etc.)**



# TM LASK ENTERPRISES LTD.

## EMERGENCY HYDRAULIC CRIMPER PARTS FOR ON-SITE REPAIRS.

PART NUMBER	DESCRIPTION	QUANTITY	COST EACH
B120	3/8 HYKIT - 3/8 HD HYDR REPAIR KIT	3	\$ 186.71
5100544	B131-B, INSERT, ANVIL/JAW, CUTTER	20	\$ 16.61
5100644	B100C HD - LONG CYLINDER CONNECTOR HD	2	\$ 199.22
5100682	B132 - ANVIL ALL	1	\$ 163.39
5100751	B106 CR HDCH RIGHT SIDE PLATE HD CBL HK	2	\$ 409.82
5100752	B106 CL HDCH LEFT SIDE PLATE HD CBL HK	2	\$ 409.82
5100574	B113-5/16DC7CHD - CUTTER JAW DBL CRIMP HD 5/16"	1	\$ 347.59
5100575	B113-5/16DC7HD - PLAIN JAW DBL CRIMP HD 5/16"	1	\$ 275.91
5100582	B113-38-7HD - PLAIN JAW SINGLE CRIMP HD 3/8"	1	\$ 275.91
5100585	B113-38C7HD - CUTTER JAW SINGLE CRIMP HD 3/8"	1	\$ 347.59
5101116	B107ML - MIKE HANDLE	1	\$ 31.80
5101118	B107MS - MIKE SWITCH	1	\$ 38.09

ALL TAXES EXTRA IF APPLICABLE

F.O.B. - SURREY, B.C.

THIS IS A RECOMMENDED LIST OF STOCK PARTS TO KEEP ON HAND FOR REPAIRING 2-3 TOOLS



# TM LASK ENTERPRISES LTD.

## HYDRAULIC POWER-PAK PARTS LIST

<u>PART NBR.</u>	<u>QTY</u>	<u>DESCRIPTION</u>
5100780	1	8-1/2 HP GXV 270 Honda Engine
5100805	1	Series"2000" Manifold w/relief valve cavity NPT ports cube
5100799	3	Parker subplate plugs NPT
5100840	1	Use w/Paul Brong sub-plate Parker
5100841	1	Pressure Relief Cartridge for "94" Manifold
5100790	1	Pipe 3/8" NPT x 6" long Sch 80 nipple
5100508	1	Female adapters
5100826	1	Parker straight thread adapter JIC/ORB
5100789	4	Pipe 3/8" NPT x 4" long Sch 80
5100416	1	Parker quick coupler socket "snap type"
5100416	1	Parker quick coupler nipple "snap type"
5100787	1	Pipe 1/2" NPT x 6" long Sch 80 nipple
5100845	1	Parker reducer bushing (for manifold) 1/2" Male - 3/8" Female
5100870	4	Strain relief connector
5100854	1	Snubber
5100838	1	Pressure gauge 0-3000 psi
5100839	1	Parker Subplate to gauge adapter 1/2" male - 1/4" female
5100442	2	Directional control valves
5100832	1	Parker 90 street elbow ORB male/female
5100510	1	Fluid Tank c/w Lid
5100860	1	3/4" Coupling
5100428	1	Filler breather, 3/4" NPT
5100390	1	24" Parker Rubber Hose - F4210606886
5100762	1	Gear Pump - D14AA2A
5100448	1	Engine to Pump Coupling
5100791	1	Parker male pipe nipple
5100793	1	Parker straight thread adapter
5100794	1	Parker JIC/ORB Adapter
5100806	1	DMIC suction strainer
5100420	1	12 V Battery
5100507	2	Electrical Connectors
5100808	1	Throttle
5100858	1	Push Button Start Switch
	60	Litres of Hydraulic Oil - AW32 - Winter AW68 -Summer

# TM LASK ENTERPRISES LTD.

## HYDRAULIC TWINLINE HOSES

<u>PART NBR.</u>	<u>QTY</u>	<u>DESCRIPTION</u>
5100405	1	30 FT. 3/8" JIC, 3/8" HOSE
5100406	1	35 FT. 3/8" JIC, 3/8" HOSE
5100403	1	40 FT. 3/8" JIC, 3/8" HOSE
5100407	1	50 FT. 3/8" JIC, 3/8" HOSE
5100408	1	60 FT. 3/8" JIC, 3/8" HOSE

**\*\*NOTE\*\*** - The above hoses include only the pressed end fittings supplied by supplier.

### ALSO REQUIRED:

5100836	1	WIRING LENGTH OF HOSE + 3 FT
5100507	1	ELECTRICAL CONNECTOR M/F
5100528	2	8" LENGTHS HEAT SHRINK

### FITTINGS TO CONNECT TO HYDRAULIC POWER UNIT:

5100508	1	FEMALE ADAPTERS - 0202-6-6
5100795	4	MALE PARKER ADAPTERS - 0103-6-6
5100418	1	PARKER QUICK COUPLER NIPPLE "SCREW TYPE" - 3010-3 (MALE)
5100418	1	PARKER QUICK COUPLER SOCKET "SCREW TYPE" - 3050-3 (FEMALE)
5100416	1	PARKER QUICK COUPLER SOCKET "SNAP TYPE" - 4050-3 (FEMALE)
5100416	1	PARKER QUICK COUPLER NIPPLE "SNAP TYPE" - 4010-3 (MALE)

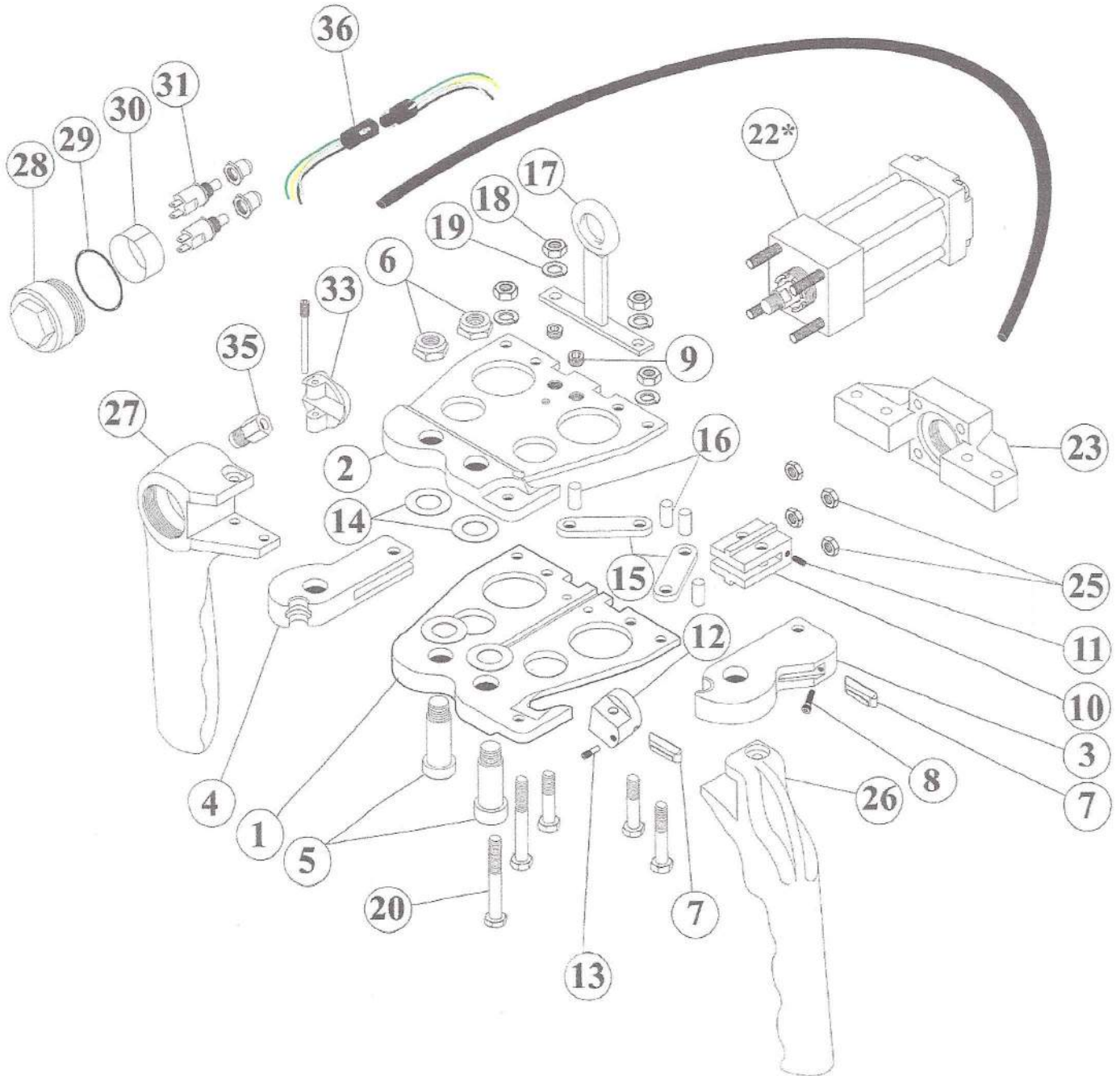
### FITTINGS TO CONNECT TO HYDRAULIC CRIMPER:

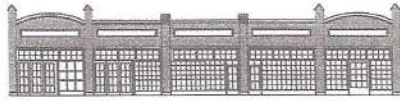
5100830	1	PARKER MALE PIPE NIPPLE - 0101-6-6
5100418	1	PARKER QUICK COUPLER NIPPLE "SCREW TYPE" - 3010-3 (MALE)
5100418	1	PARKER QUICK COUPLER SOCKET "SCREW TYPE" - 3050-3 (FEMALE)



PAUL BRONG MACHINE WORKS INC.  
421 N.E. 12th Avenue Portland, Oregon 97232-2786

# HYDRAULIC

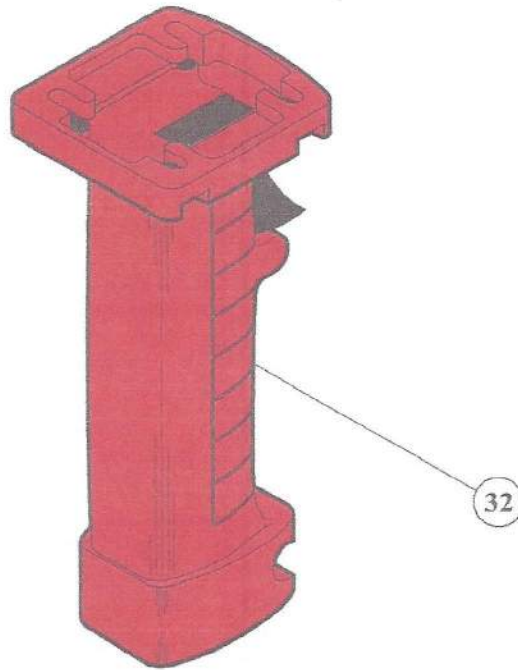
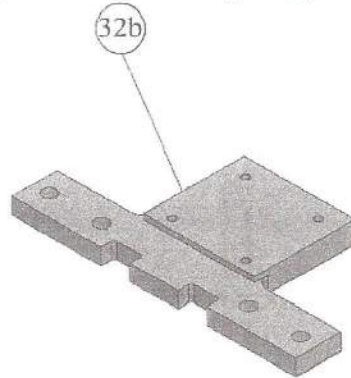




PAUL BRONG MACHINE WORKS INC.  
421 N.E. 12th Avenue Portland, Oregon 97232-2786

---

## HYDRAULIC (optional equipment)

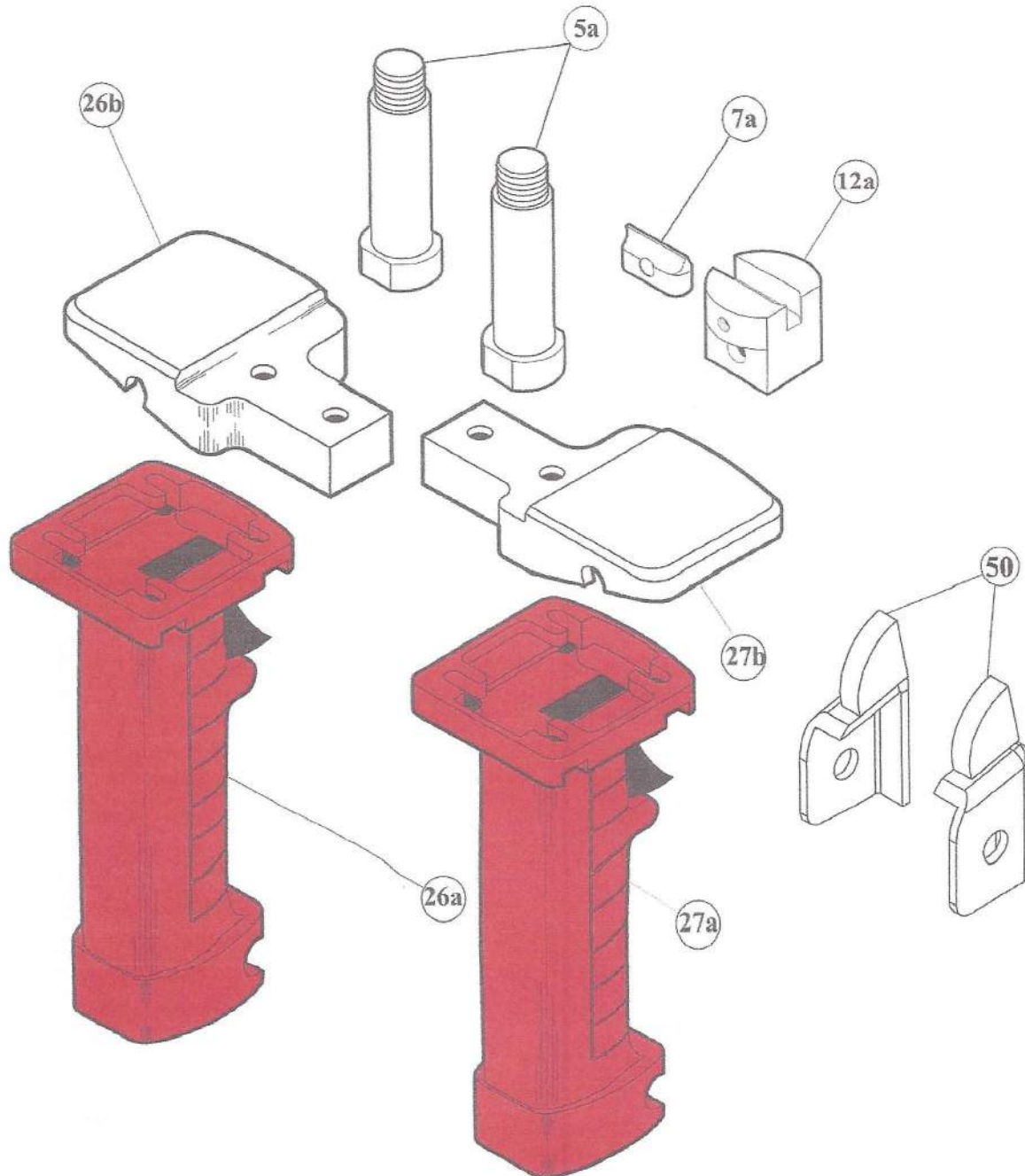


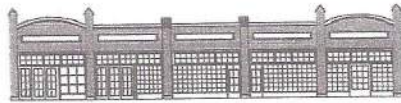




PAUL BRONG MACHINE WORKS INC.  
421 N.E. 12th Avenue Portland, Oregon 97232-2786

## HYDRAULIC (optional equipment)





PAUL BRONG MACHINE WORKS INC.  
421 N.E. 12th Avenue Portland, Oregon 97232-2786

---

## HYDRAULIC (optional equipment)



### HYDRAULIC BENCH/MOUNT CUTTER

Quant	ea/set	Titan #	WRI Item #	Brong Item #	Item Name
1	1			BH/YADJHC	Adjustable bench mount tool
1	1	1453	5100742	B106CLHHC	Left Side Plate-Hand Held
1	1	1467	5100740	B106CRHHC	Right Side Plate-Hand Held
2	1	1884	5100550	B113-SC	Jaw for Strny & Hand Held Cutter
1	1			B109ADJ	Adjustable Bench Mount

PAUL BRONG MACHINE WORKS, INC.  
 421 N.E. 12TH AVENUE  
 PORTLAND, OREGON 97232  
 (503) 232-2171

HYDRAULIC

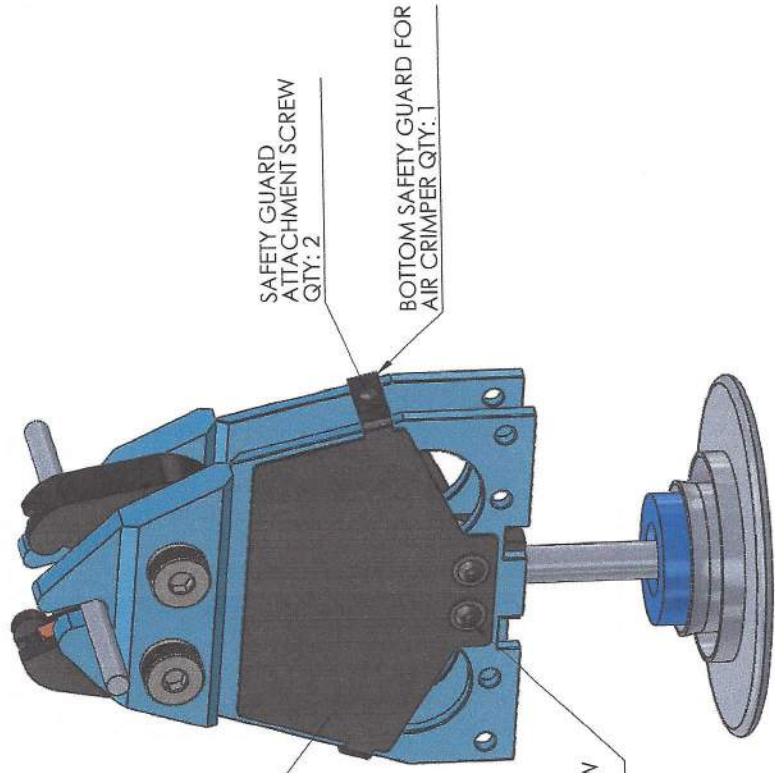
Item#	Quan	ea/set	WRI Item #	BRONG Item #	Item Name
	1	e	5101016	B 3/8 HD CRMP	3/8" HD Crimper-Hydraulic
	1	e	5100584	B120 H/Y KIT	HD Hydr Repair Kit
1	1	e	5100751	B106 CR HDCH	Right Side Plate-HD Cbl Hk
2	1	e	5100752	B106 CL HDCH	Left Side Plate-HD Cbl Hk (includes #9)
* 3	1	e	5100585	B113-38C7HD	Cutter Jaw Single Crimp HD 3/8 (Includes #8)
* 3	1	e	5100574	B113-516DC7CH	Cutter Jaw Dbl Crimp HD 5/16
* 4	1	e	5100582	B113-38-7HD	Plain Jaw Single Crimp HD 3/8
* 4	1	e	5100575	B113-516DC7HD	Plain Jaw Dbl Crimp HD 5/16
* 5	2	e	5100591	B110HD LONG	Jaw Bolts - HD - Long
* 5 a	2	e	5100590	B110 XHD	Jaw Bolt - Xtra HD
6	2	e	5100594	B111	Jaw Bolt Nuts-All
* 7	2	e	5100544	B131-B	Std Anvil/Jaw Cutter Insert
* 7 a	2	e	5100543	B131-X	HD Anvil/Jaw Cutter Inserts (Requires #12a)
8	1	e	5100686	B132-B	Jaw Cutter Set Screws - All
9	2	e	5100602	B106 SP-S	Sideplate Set Screw
10	1	e	5100644	B100C HD	Long Cylinder Connector-HD (Includes #11)
11	1	e	5100645	B100C SC	Long Cylinder Connector Set Screw
* 12	1	e	5100682	B132	Anvil - All (Includes #13)
* 12 a	1	e	5100543	B132-X	HD Anvil (Requires #7a)
13	1	e	5100684	B132-A	Anvil Set Screw - All
14	4	e	5100596	B112	Jaw Bolt Washers-All
15	2	e	5100439	B102HD	Connector Link
16	4	e	5100722	B100A HD	7/16" X .900 Pivot Pin-HD
17	1	e	5100524	B107CC	Handle Hanger Ring-All
20	17	s	5100584	B120-Y	Nut & Bolt Side Plate Repair Kit (Includes #18, #19)
22	1	e	5100536	B114HY-B	Hyd CylPKR2.00CTB31USACX2.5 (Includes #25)
22-A	1	e	5100521	B114HY-PR	Piston Rod Assembly-Complete
22-B	1	e	5100847	B116RK2HLTS00	Seal Kit
22-C	1	e	5100849	B116PK202HLL0	Piston Seal Kit (New Style)
22-D	1	e	5100848	B116PR202H000	Piston Ring Kit (Old Style)
23	1	e	5100652	B114HY-A	Hydraulic Mounting Block
* 26	1	e	5100519	B107CL HY	Left Handle for Hydraulic
* 26 a	1	e	5101116	B107MLS	Mike Handle with Switch (Requires #26b)
* 26 b	1	e		B107DM-R	Double Mike Bracket (Requires #26a)
* 27	1	e	5100521	B107CR HY	Right Handle for Hydraulic (Includes #28, #29, #30, #31, #33, #35)
32 a	1	e	5101118	B107MLS	Mike Handle with Switch (requires #32b)
32 b	1	e		B107MB	Single Mike Bracket



Item#	Quan	ea/set	WRI Item #	BRONG Item #	Item Name
*	<b>DENOTES MULTIPLE OPTIONS</b>				
* 27 a	1	e	5101116	B107ML	Mike Handle (Requires #27b)
* 27 b	1	e		B107DM-L	Double Mike Bracket-Left (Requires #27a)
28	1	s	5100525	B107HY-R CAP	Hydraulic Handle-Cap Only (Includes #29, #30)
31	2	e	5100756	B107HY R/S	Switch w/ Boot
33	1	e	5100852	B107 HY RKR	Rocker Control w/Pin
35	1	e	5100446	B107CR BHY	Brass Wire Coupler
36	1	e	5100507	B114HYCONN	M/F Electrical Connector
45	1	e	5100847	B116RK2HLTS06	Seal Kit RK2HLTS061
47	1	e		B116CB202HL00	Seal Body KitCB202HL001
48	1	e	5100848	B116PR202H001	Piston Ring Kit PR202H001
49	1	e	5100710	B116RG2HL061	Rod Gland Kit RG2HL061
50	1	s	5100726	B133	Cable Hooks (L&R)-All-Pair
*	<b>DENOTES MULTIPLE OPTIONS</b>				

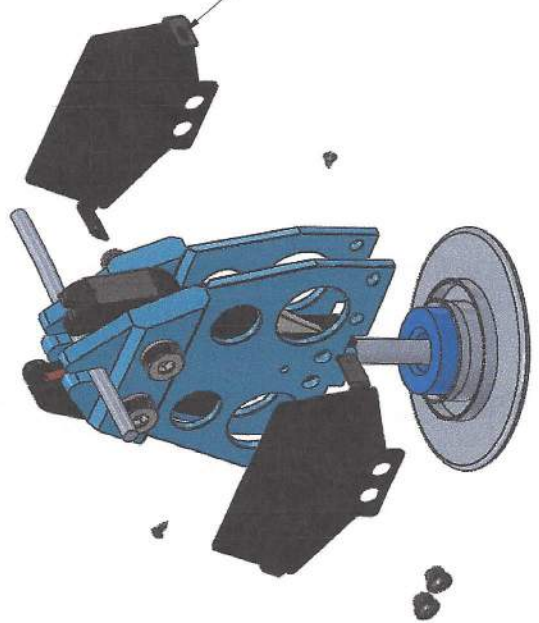


- SAFETY UPGRADE KIT - HYDRAULIC**
- TOP SAFETY GUARD (HYDRAULIC)
  - BOTTOM SAFETY GUARD (HYDRAULIC)
  - SAFETY GUARD ATTACHMENT SCREW, QTY: 2
  - SAFETY GUARD RETAINING SCREW ASSEMBLY, QTY: 2

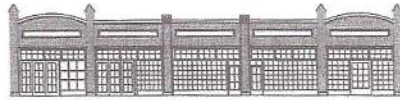


BOTTOM SAFETY GUARD IS IDENTICAL TO TOP SAFETY GUARD, BUT THE MOUNT TABS ARE SLOTTED

EXPLODE VIEW

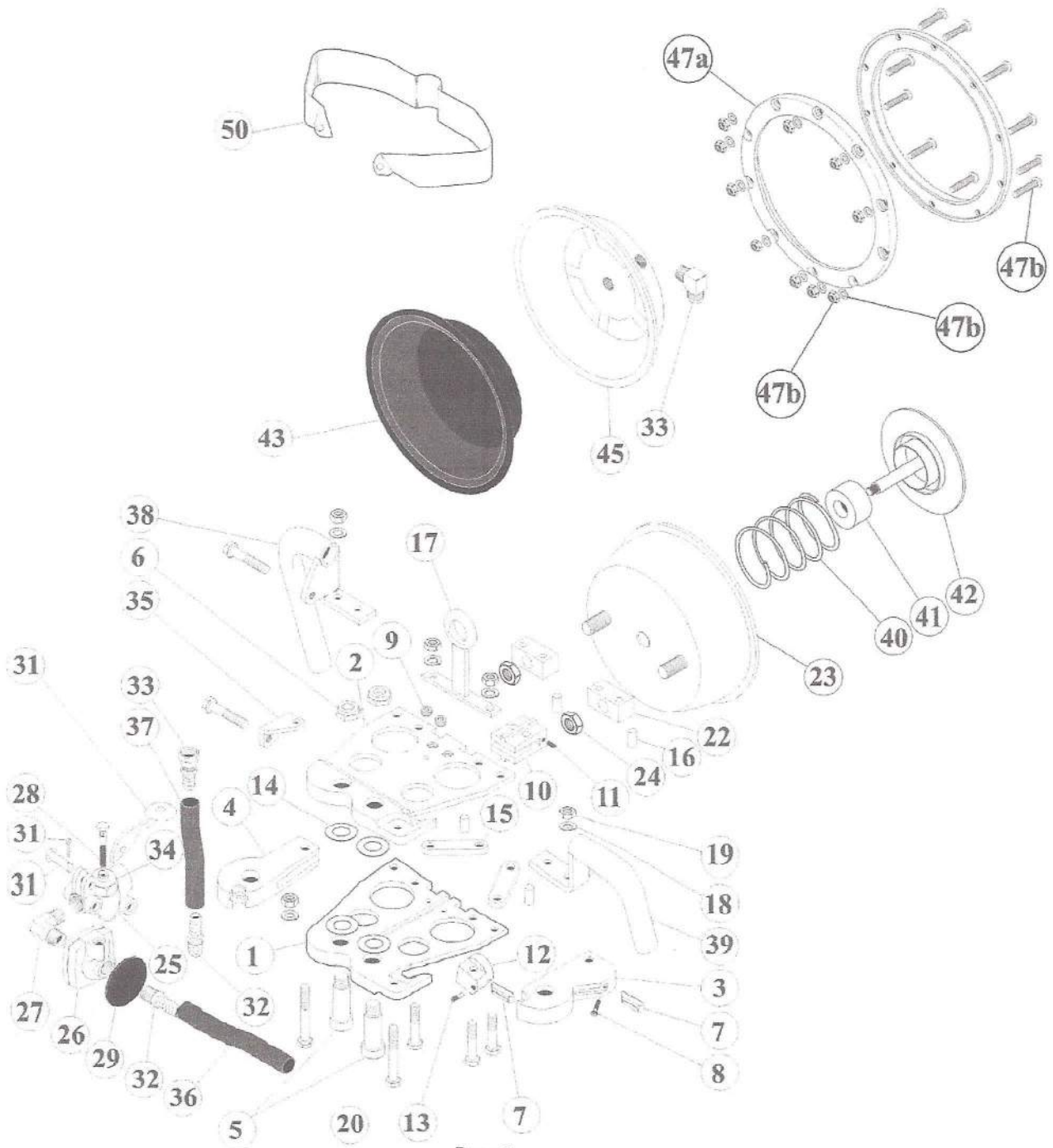


NAME		DATE		PAUL BRONG MACHINE WORKS	
DRAWN		CHECKED		TITLE:	
DIMENSIONS ARE IN INCHES		FRACTIONAL		SEALERS	
ANGULAR MACH		BEND		WRI CUTTER HEAD	
TWO PLACE DECIMAL		THREE PLACE DECIMAL		SAFETY GUARD ASSEMBLY	
INTERFER GEOMETRIC		TOLERANCING PER:		SIZE DWG. NO.	
MATERIAL		FINISH		B 1100458_SE	
NEXT ASY		USED ON		REV	
APPLICATION		DO NOT SCALE DRAWING		SCALE: 1:5 WEIGHT: SHEET 1 OF 1	
<p>UNLESS OTHERWISE SPECIFIED:</p> <p>HYDRAULIC CRIMPER</p> <p>COMMENTS:</p> <p>HYDRAULIC CRIMPER</p>					
<p>PROPRIETARY AND CONFIDENTIAL</p> <p>THE INFORMATION CONTAINED IN THIS DRAWING IS THE SOLE PROPERTY OF PAUL BRONG MACHINE WORKS. ANY REPRODUCTION OR TRANSMISSION OF THIS DRAWING WITHOUT THE WRITTEN PERMISSION OF PAUL BRONG MACHINE WORKS IS PROHIBITED.</p>					



PAUL BRONG MACHINE WORKS INC.  
421 N.E. 12th Avenue Portland, Oregon 97232-2786

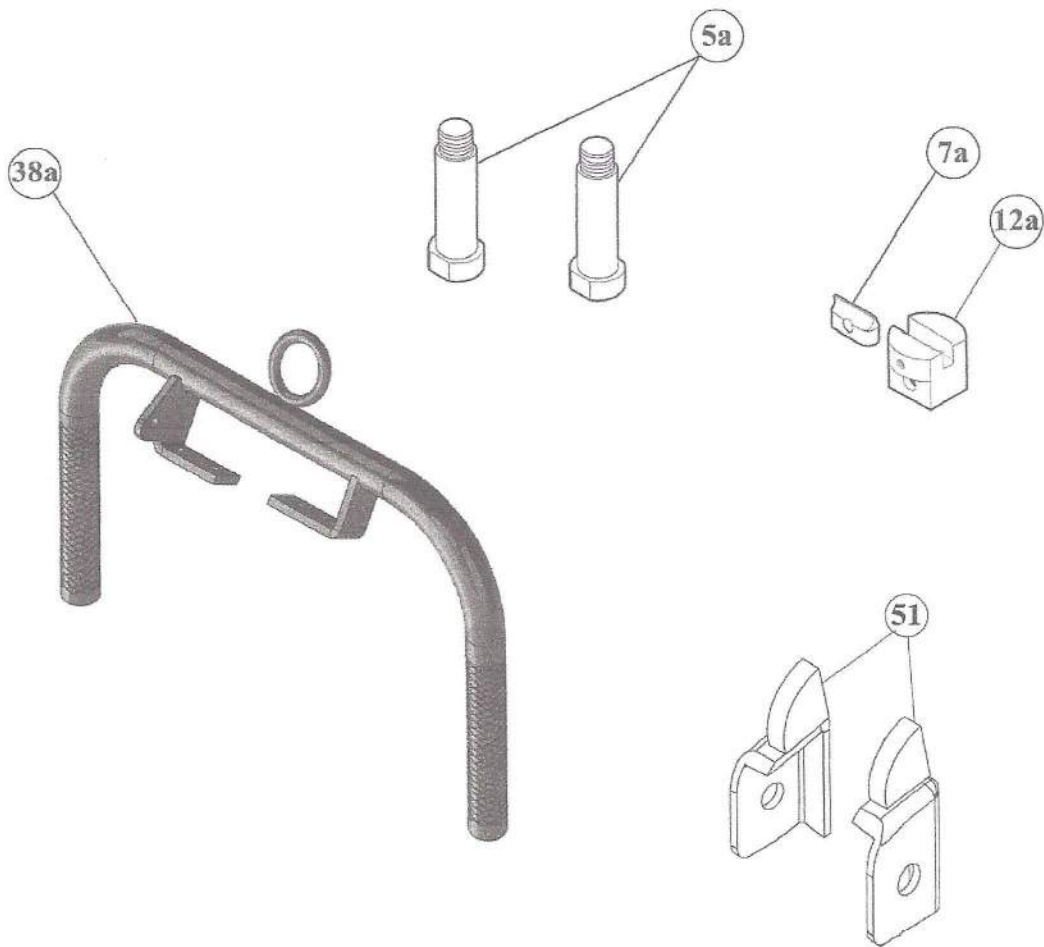
# TYPE 36 PNEUMATIC





PAUL BRONG MACHINE WORKS INC.  
421 N.E. 12th Avenue Portland, Oregon 97232-2786

## TYPE 36 PNEUMATIC (optional equipment)





PAUL BRONG MACHINE WORKS, INC.

421 N.E. 12TH AVENUE  
 PORTLAND, OREGON 97232  
 (503) 232-2171

TYPE 36 PNEUMATIC CRIMPER

Item#	Quanea/set	WRI	Item #	BRONG Item #	Item Name
	1	e	5101009	B 5/16 CRMPR	5/16" Crimper-Pneu - Complete Tool
	1	e	5101012	B 9/32 CRMPR	9/32" Crimper-Pneu - Complete Tool
	1	e		B120 WRI PN KIT	5/16-9/32 HD Pneu Repair Kit
* 1	1	e	5100748	B106 CR CH	Right Side Plate-Std-Cbl Hk
* 1	1	e	5100751	B106 CR HDCH	Right Side Plate-HD Cbl Hk
* 2	1	e	5100744	B106 CL CH	Left Side Plate-Std-Cbl HK (Includes #9)
* 2	1	e	5100752	B106 CL HDCH	Left Side Plate-HD Cbl Hk (Includes #9)
* 3	1	e	5100571	B113-516DC7C	Cutter Jaw Double Crimp 5/16" (Includes #8)
* 3	1	e	5100574	B113-516DC7CH	Cutter Jaw Dbl Crimp HD 5/16 (Includes #8)
* 3	1	e	5100559	B113-932-C7	Cutter Jaw Single Crimp 9/32" (Includes #8)
* 3	1	e	5100564	B113-932-C7HD	Cutter Jaw Single CrimpHD 9/32 (Includes #8)
* 3	1	e	5100561	B113-932DC7C	Cutter Jaw Double Crimp - 9/32 (Includes #8)
* 3	1	e	5100567	B113-932DC7CH	Cutter Jaw Dbl Crimp HD 9/32 (Includes #8)
* 4	1	e	5100568	B113-516DC7	Plain Jaw Double Crimp 5/16"
* 4	1	e	5100575	B113-516DC7HD	Plain Jaw Dbl Crimp HD 5/16
* 4	1	e	5100556	B113-932	Plain Jaw Single Crimp 9/32"
* 4	1	e	5100566	B113-932 HD	Plain Jaw Single Crimp HD 9/32
* 4	1	e	5100563	B113-932DC7	Plain Jaw Double Crimp 9/32"
* 4	1	e	5100565	B113-932DC7HD	Plain Jaw Dbl Crimp HD 9/32
* 5	2	e	5100586	B110	Jaw Bolts-All
* 5 a	2	e	5100590	B110 XHD	Jaw Bolt - Xtra HD
* 5	2	e	5100591	B110HD LONG	Jaw Bolts - HD - Long
* 6	2	e	5100594	B111	Jaw Bolt Nuts-All
* 7	2	e	5100544	B131-B	Std Anvil/Jaw Cutter Insert
* 7 a	1	e	5100543	B131-X	HD Anvil/Jawcutter Insert (Requires #12a)
* 8	1	e	5100686	B132-B	Jaw Cutter Set Screws - All
* 9	2	e	5100602	B106 SP-S	Sideplate Set Screw
* 10	1	e	5100643	B100C	Long Cylinder Connector-All (Includes #11)
* 10	1	e	5100644	B100C HD	Long Cylinder Connector-HD (Includes #11)
* 11	1	e	5100645	B100C SC	Long Cylinder Conn Set Screw
* 12	1	e	5100682	B132	Anvil - All (Includes #13)
* 12 a	1	e	5100683	B132-X	HD Anvil (Requires #7a)
* 13	1	e	5100684	B132-A	Anvil Set Screw - All
* 14	4	e	5100596	B112	Jaw Bolt Washers-All
* 15	2	e	5100648	B102	Connector Link-9/32,5/16,3/8
* 15	2	e	5100439	B102HD	Connector Link
* 16	4	e	5100720	B100A	3/8" X .900 Pivot Pin-All
* 16	4	e	5100722	B100A HD	7/16" X .900 Pivot Pin-HD
* 17	1	e	5100524	B107CC	Handle Hanger Ring-All
* 20	17	s	5100593	B120	Nut & Bolt Side Plate Repair Kit (Includes #18, #19)
* 22	2	e	5100650	B103	Cannister Blocks-All
* 23	1	e	5100488	B114C-932	Cylinder Can Casing-9/32 (Includes #22, #24)
* 24	2	e	5100656	B104	Cannister Block Nut-All
* 25	1	e	5100715	B115C	Valve for All Models (Includes #28, #31, #34)
* DENOTES MULTIPLE OPTIONS					
* 26	1	e	5100729	B134	Quick Exhaust (Includes #29)
* 27	1	e	5100635	B117A	Valve to Exhaust Fitting-All
* 28	1	s	5100713	B115C (99A)	Valve Kit: "0" Rg, Sprg & Wsh



PAUL BRONG MACHINE WORKS, INC.  
 421 N.E. 12TH AVENUE  
 PORTLAND, OREGON 97232  
 (503) 232-2171

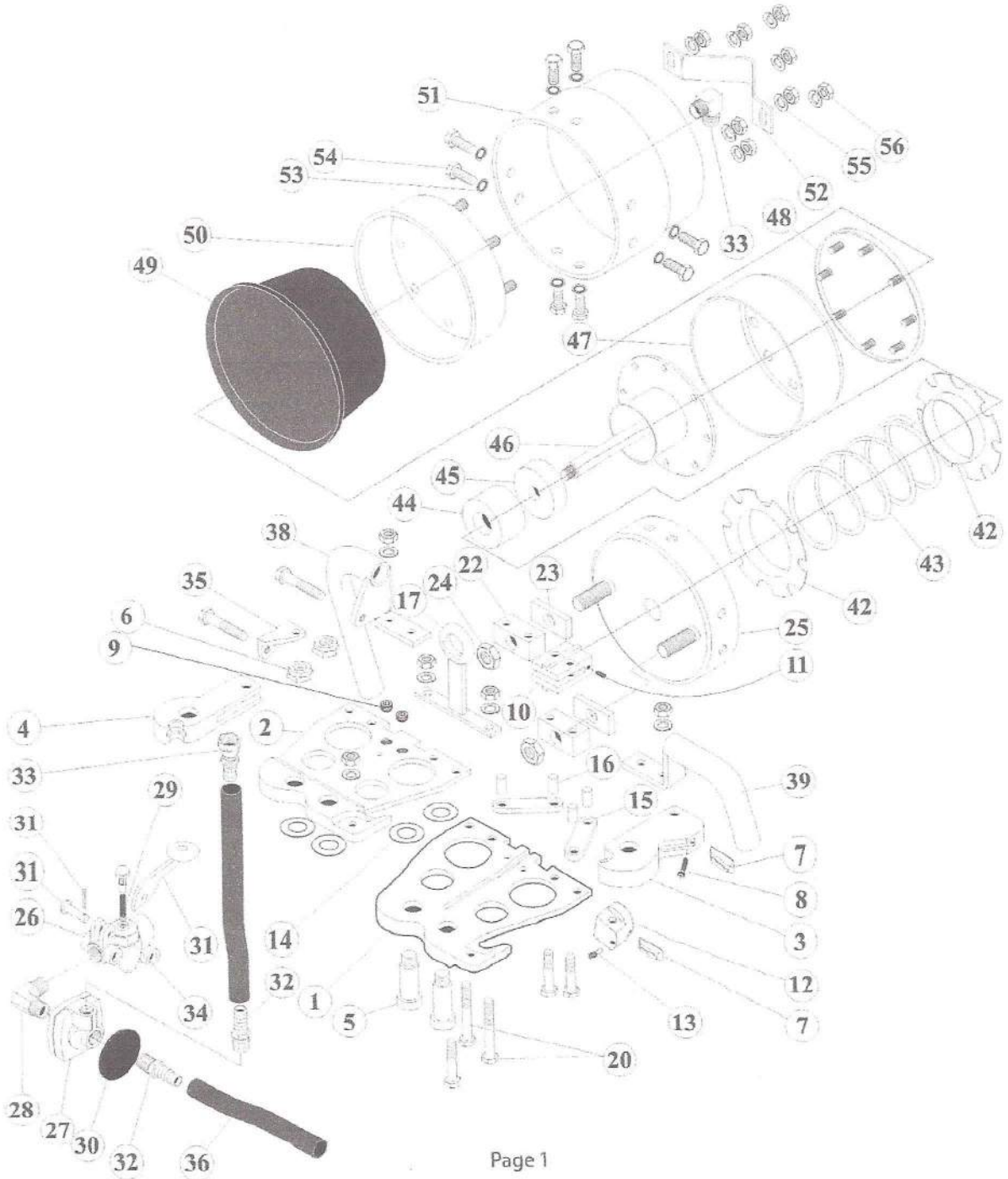
TYPE 36 PNEUMATIC CRIMPER

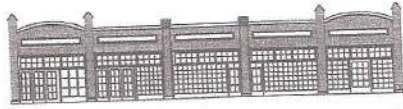
Item#	Quanea/set	WRI Item #	BRONG Item #	Item Name
29	1	e	5100616 B134-A	Quick Exhst-Rubber Pads-Large
31	1	s	5100812 B115VT	Valve Trigger, pins, washer
32	2	e	5100638 B117D	Exhaust to Tube Fittings-All
33	2	s	5100636 B117B	Cannister to Tube Fitting-All
34	1	s	5100712 B115C (99C)	Valve Repr Kit, comp intrnl pts
35	1	e	5100426 B115C1	Valve Bracket-All models
* 38	1	e	5100517 B107CR	Right Hand Hdl (Valve Side)-All
* 38 a	1	e	5100518 B107	One-piece Handle
39	1	e	5100515 B107CL	Left Handle-All
40	1	e	5100674 B121-932	Cylinder Spring-9/32 & 5/16
41	1	e	5100694 B135-932	Urethane Blks-9/32 & 5/16
42	1	e	5100662 B105-932-M	Plunger Rod for 9/32
43	1	e	5100613 B114A-932	Diaphram for 9/32, 5/16, 3/8A
45	1	e	5100630 B114B-932	Steel Cover-9/32, 5/16, 3/8A
* 47 a	2	s	B114DRC-932	2/10 Bolt Clamp/Bolts & Nuts
* 47 b	30	s	B114DRC-NB	30pc Clamp Bolt, Nut, Washer Set
50	1	e	B136-932-X	Safety Strap-Type 36 Service
51	1	s	5100726 B133	Cable Hooks (L&R)-All-Pair
* DENOTES MUTIPLE OPTIONS				



PAUL BRONG MACHINE WORKS INC.  
421 N.E. 12th Avenue Portland, Oregon 97232-2786

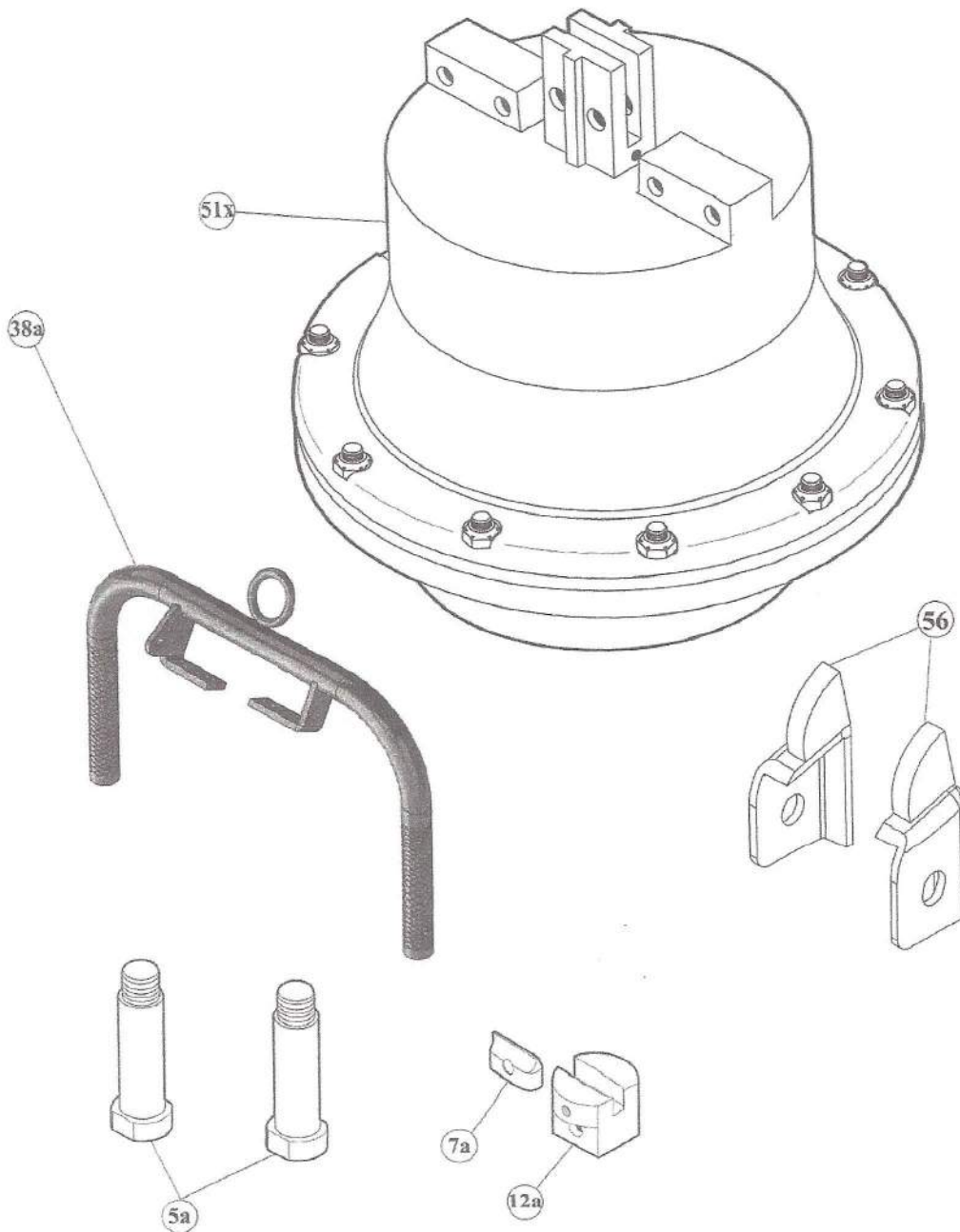
# TYPE 36 ROTO CHAMBER





PAUL BRONG MACHINE WORKS INC.  
421 N.E. 12th Avenue Portland, Oregon 97232-2786

# TYPE 36 ROTO CHAMBER (optional equipment)





**PAUL BRONG MACHINE WORKS, INC.**  
**421 N.E. 12TH AVENUE**  
**PORTLAND, OREGON 97232**  
**(503) 232-2171**

**ROTO CHAMBER**

Item#	Quan	ea/set	WRI	Item #	BRONG Item #	Item Name
	1	e	5101020	B 3/8 HD ROTO	3/8" HD ROTO Crimper-Pneu - Complete Tool	
	1	e		B120 WRI ROTO KIT	3/8 HD ROTO Repair Kit	
1	1	e	5100751	B106 CR HDCH	Right Side Plate-HD Cbl Hk	
2	1	e	5100752	B106 CL HDCH	Left Side Plate-HD Cbl Hk	
* 3	1	e	5100585	B113-38C7HD	Cutter Jaw Single Crimp HD 3/8 (Includes #8)	
* 3	1	e	5100574	B113-516DC7CH	Cutter Jaw Dbl Crimp HD 5/16 (Includes #8)	
* 4	1	e	5100582	B113-38-7HD	Plain Jaw Single Crimp HD 3/8	
* 4	1	e	5100575	B113-516DC7HD	Plain Jaw Dbl Crimp HD 5/16	
* 5	2	e	5100591	B110HD LONG	Jaw Bolts - HD - Long	
* 5 a	2	e	5100590	B110 XHD	Jaw Bolt - Xtra HD	
6	2	e	5100594	B111	Jaw Bolt Nuts-All	
* 7	2	e	5100544	B131-B	Std Anvil/Jaw Cutter Insert	
* 7 a	2	e	5100543	B131-X	HD Anvil/Jaw Cutter Insert (Requires #12a)	
8	1	e	5100686	B132-B	Jaw Cutter Set Screws - All	
9	2	e	5100602	B106 SP-S	Sideplate Set Screw	
10	1	e	5100644	B100C HD	Long Cylinder Connector-HD (Includes #11)	
11	1	e	5100645	B100C SC	Long Cylinder Conn - Set Screw	
* 12	1	e	5100682	B132	Anvil - All (Includes #13)	
* 12 a	1	e	5100683	B132-X	HD Anvil (Requires #7a)	
13	1	e	5100684	B132-A	Anvil Set Screw - All	
14	4	e	5100596	B112	Jaw Bolt Washers-All	
15	2	e	5100439	B102HD	Connector Link	
16	4	e	5100722	B100A HD	7/16" X .900 Pivot Pin-HD	
17	1	e	5100524	B107CC	Handle Hanger Ring-All	
20	17	s	5100593	B120	Nut & Bolt Side Plate Repair Kit	
22	2	e	5100650	B103	Cannister Blocks-All	
23	2	e	5100654	B103-R-38	5/16 Cnstr Blk Shim-Roto	
24	2	e	5100656	B104	Cannister Block Nut-All	
25	1	e	5100632	B114F-38	Cover for 3/8 Roto (Includes #22, #23, #24)	
* 26	1	e	5100715	B115C	Valve for All Models (Includes #29, #31)	
27	1	e	5100729	B134	Quick Exhaust (Includes #30)	
28	1	e	5100635	B117A	Valve to Exhaust Fitting-All	
29	1	s	5100713	B115C (99A)	Valve Kit: "0" Rg, Sprg & Wsh	

\* DENOTES MUTIPLE CHOICES



**PAUL BRONG MACHINE WORKS, INC.**  
**421 N.E. 12TH AVENUE**  
**PORTLAND, OREGON 97232**  
**(503) 232-2171**

**ROTO CHAMBER**

Item#	Quanea/set	WRI	Item #	BRONG Item #	Item Name
30	1	e	5100616	B134-A	Quick Exhst-Rubber Pads-Large
31	1	s	5100812	B115VT	Valve Trigger & pins
32	2	e	5100638	B117D	Exhaust to Tube Fittings-All
33	2	s	5100636	B117B	Cannister to Tube Fitting-All
34	1	s	5100712	B115C (99C)	Valve Repr Kit, comp intl pts
35	1	e	5100426	B115C1	Valve Bracket-All models
* 38	1	e	5100517	B107CR	Rght Hand Hdl (Valve Side)-All
* 38 a	1	e	5100518	B107	One-piece Handle
39	1	e	5100515	B107CL	Left Handle-All
42	2	e	5100676	B121A-38	Cyl Spring Retainer 3/8 Roto
43	1	e	5100673	B121-38	Cylinder Spring for 3/8
44	1	e	5100693	B135-38	Urethane Blk-5/16,3/8 Roto
45	1	e	5100679	B123-38	Cylinder Spacer for 3/8 Roto
46	1	e	5100664	B105-516-38A	Plunger Rod for 5/16 & 3/8-ROTO
47	1	e	5100624	B114B-38	Diaphram Guide for 3/8 Roto
48	1	e	5100622	B114C-38	Inner Diaphram Clamp- 3/8 Roto
49	1	e	5100614	B114A-38	Diaphram for 3/8 Roto
50	1	e	5100620	B114D-38	Outer Diaphram Clamp-3/8 Roto
* 51	1	e	5100641	B114E-38C	Short Cyl Can Casing-3/8 Roto
* 51 x	1	e	5100605	B114-38CA	Aluminum Can Complete
52	1	e	5100703	B136-38	Safety Strap - 3/8 ROTO
53	16	s		B120 CANKIT A	3/8 ROTO Bolt/ Washer Kit (Includes #54)
55	16	s		B120 CANKIT B	3/8 ROTO Nut/ Washer KIT (Includes #56)
56	1	s	5100726	B133	Cable Hooks (L&R)-All-Pair

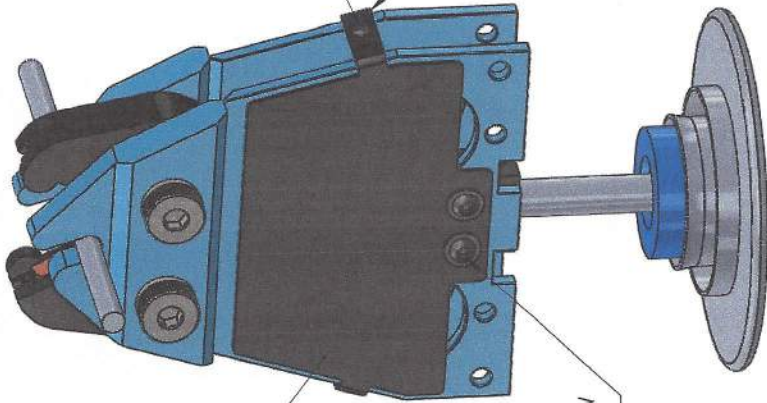
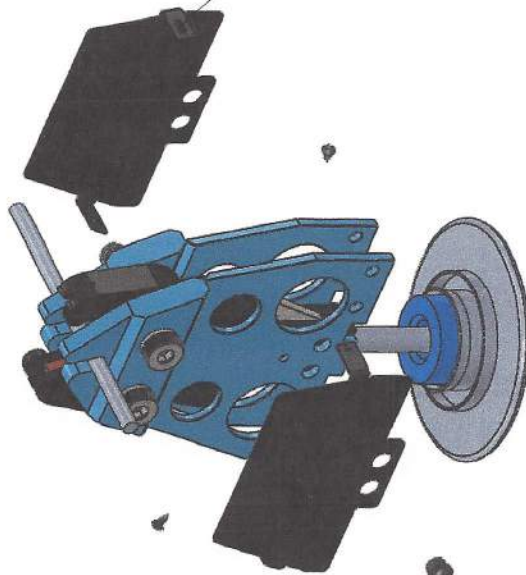
\* DENOTES MUTIPLE CHOICES

SAFETY UPGRADE KIT - AIR

- TOP SAFETY GUARD (AIR)
- BOTTOM SAFETY GUARD (AIR)
- SAFETY GUARD ATTACHMENT SCREW, QTY: 2
- SAFETY GUARD RETAINING SCREW ASSEMBLY, QTY: 2



EXPLODE VIEW



TOP SAFETY GUARD FOR AIR CRIMPER QTY: 1

SAFETY GUARD ATTACHMENT SCREW QTY: 2

BOTTOM SAFETY GUARD FOR AIR CRIMPER QTY: 1

REPLACEMENT RETAINING SCREW ASSEMBLY QTY: 2

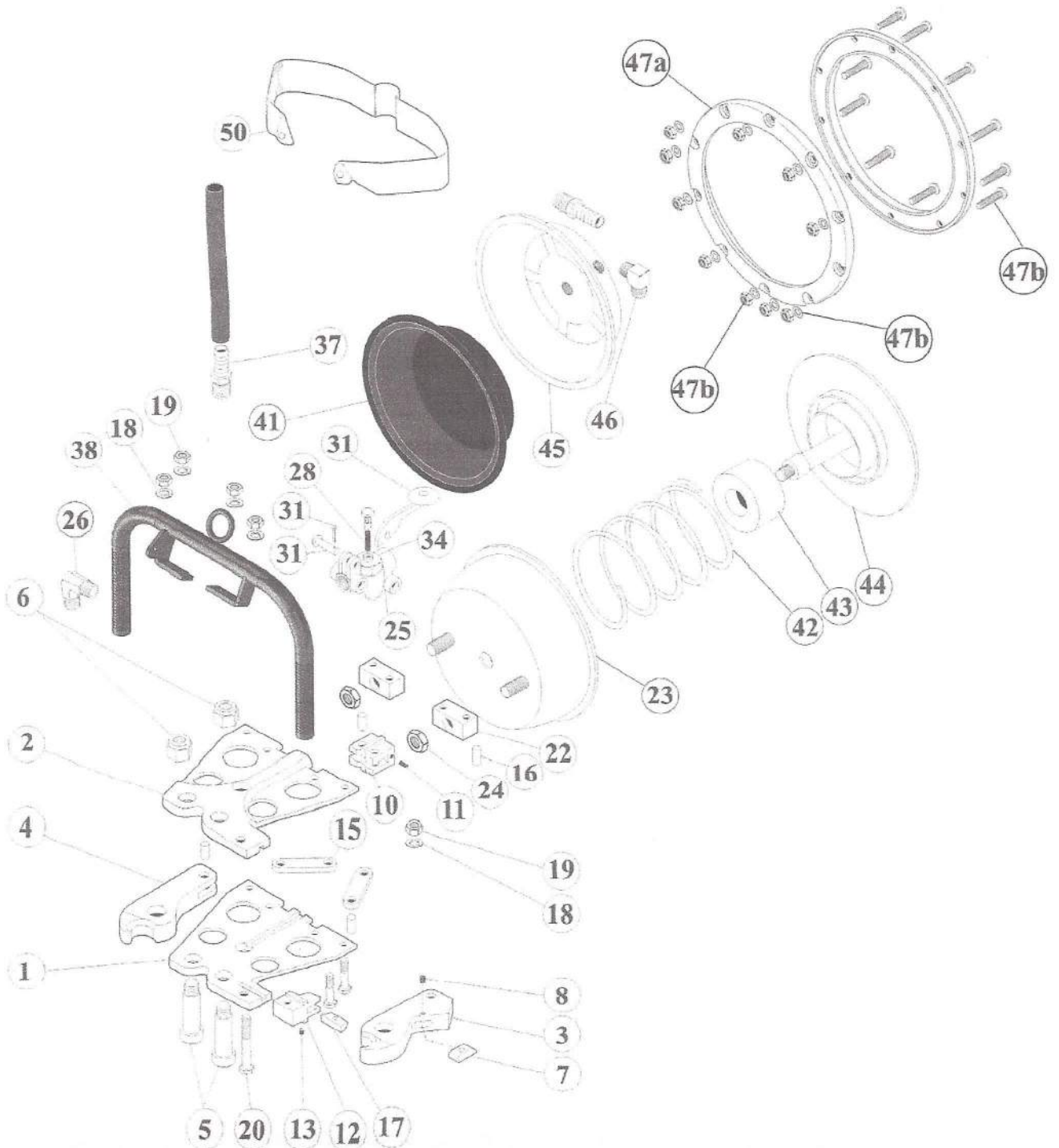
BOTTOM SAFETY GUARD IS IDENTICAL TO TOP SAFETY GUARD, BUT THE MOUNT TABS ARE SLOTTED

UNLESS OTHERWISE SPECIFIED:		NAME	DATE	PAUL BRONG MACHINE WORKS
DIMENSIONS ARE IN INCHES	DRAWN			TITLE:
TOLERANCES:	CHECKED			SEALERS
ANGULAR MACH: ±	BIG APPR.			WRI CUTTER HEAD
TWO PLACE DECIMAL ±	INFO APPR.			SAFETY GUARD ASSEMBLY
THREE PLACE DECIMAL ±	G.A.			SIZE DWG. NO.
INTERFERE GEOMETRIC	COMMENTS:			B 1100458_SE
TOLERANCING PER:				SCALE: 1:5 WEIGHT:
MATERIAL				SHEET 1 OF 1
FINISH				
DO NOT SCALE DRAWING				
APPLICATION				
NEXT ASY	USED ON			
PROPRIETARY AND CONFIDENTIAL THE INFORMATION CONTAINED HEREIN IS THE PROPERTY OF PAUL BRONG MACHINE WORKS. ANY REPRODUCTION IN PART OR AS A WHOLE WITHOUT THE WRITTEN PERMISSION OF PAUL BRONG MACHINE WORKS IS PROHIBITED.				

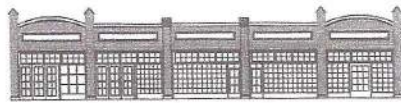


PAUL BRONG MACHINE WORKS INC.  
421 N.E. 12th Avenue Portland, Oregon 97232-2786

## TYPE 36 PNEUMATIC (WCR)

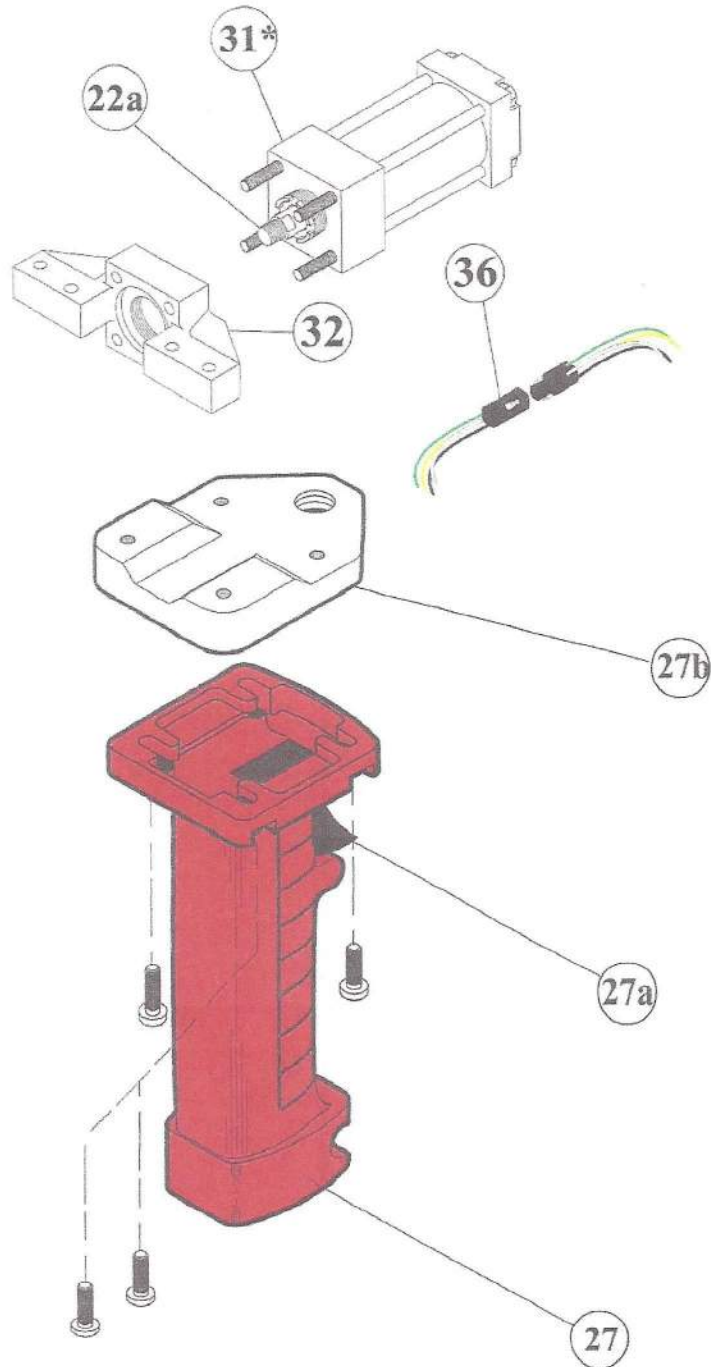






PAUL BRONG MACHINE WORKS INC.  
421 N.E. 12th Avenue Portland, Oregon 97232-2786

## HYDRAULIC (WCR) (optional equipment)





PAUL BRONG MACHINE WORKS, INC.  
 421 N.E. 12TH AVENUE  
 PORTLAND, OREGON 97232  
 (503) 232-2171

WCR AIR/HYDRAULIC CRIMPER

Item#	Quanea/set	WRI Item #	BRONG Item #	Item Name
	1	e	BW 3/8 CMPR-H	Wrights 3/8 Crimper-Hydr
	1	e	BW 3/8 CMPR-P	Wrights 3/8 Crimper-Pneu
*	1	e	5101172 BW106 CR 38	Right Side Plate (Lower) 3/8-WCR
*	1	e	5101174 BW106 CR 932	Right Side Plate (Lower) 9/32-WCR
*	2	e	5101176 BW106 CL 38	Left Side Plate (Upper) 3/8-WCR
*	2	e	5101178 BW106 CL 932	Left Side Plate (Upper) 9/32-WCR
*	3	e	5101162 BW113-38C7	Cutter Jaw Single Crp 3/8"-WCR (Includes #8)
*	3	e	BW113-516C7C	Cutter Jaw Dble Crp 5/16"-WCR (Includes #8)
*	3	e	5101164 BW113-932DC7C	Cutter Jaw Dbl Crimp 9/32"-WCR (Includes #8)
*	4	e	5101154 BW113-38-7	Plain Jaw Single Crp 3/8"-WCR
*	4	e	BW113-516DC7	Plain Jaw Dbl Crimp 5/16"-WCR
*	4	e	5101156 BW113-932DC7	Plain Jaw Dbl Crimp 9/32"-WCR
*	5	e	5101146 BW110	Jaw Bolt-WCR
*	5	e	5101148 BW110-5/8	5/8 Jaw Bolt-WCR (Requires 932 Jaw, 932 Side Plate)
*	6	e	5101150 BW111	Jaw Bolt Nut-WCR
*	6	e	5101152 BW111-5/8	5/8 Jaw Bot Nut-WCR
	7	e	5101086 BW131-B	Jaw Cutter Insert-WCR
	8	e	5101090 BW131-C	Cutter Blade Screw-WCR
	10	e	5101122 BW100C	Long Cyl Connector-WCR (Includes #11)
	11	e	5100645 B100C SC	Long Cylinder Connector Set Screw
	12	e	5101088 BW132	Anvil-WCR (Includes #13)
	13	e	5100684 B132-A	Anvil Set Screw - All
*	15	e	5101130 BW102-.250	Connector Link-.250-WCR
*	15	e	5101132 BW102-.275	Connector Link-.275-WCR
*	15	e	5101134 BW102-.300	Connector Link-.300-WCR
*	15	e	5101136 BW102-.325	Connector Link-.325-WCR
	16	e	5100720 B100A	3/8 x .900 Pivot Pin-All
	17	e	5101084 BW131-A	Anvil Cutter Insert-WCR
	18	s	BW120 WCR PN KIT	Wrights 3/8-9/32 Pneu Repr Kit (Includes #19)
	18	s	BW120 WCR HY KIT	Wrights 3/8-9/32 HY Repr Kit (Includes #19)
	19	s	BW120 NUT/BOLT KIT	Wrights 3/8-9/32 Nut/Bolt Kit
	20	e	5101096 BW121	Blade Holder Bolt-WCR
	22	e	5101142 BW103	Cannister Block-WCR
	22-A	e	5101144 BW114HY-PR	Piston Rod Assembly-Complete
	22-B	e	5100847 B116RK2HLTS061	Seal Kit
	22-C	e	5100849 B116PK202HLL01	Piston Seal Kit (New Style)
	22-D	e	5100848 B116PR202H001	Piston Ring Kit (Old Style)
	23	e	5101078 BW114C-932	Cylinder Can Casing (Includes #22, #24)
	24	e	BW104	Cannister Block Nut-All
*	25	e	5100715 B115C	Valve for All Models (Includes #28, #31, #34)
*	DENOTES MULTIPLE OPTIONS			

PAUL BRONG MACHINE WORKS, INC.  
 421 N.E. 12TH AVENUE  
 PORTLAND, OREGON 97232  
 (503) 232-2171

WCR AIR/HYDRAULIC CRIMPER

Item#	Quanea/ser	WRI	Item #	BRONG Item #	Item Name
26	1	e	5100635	B117A	Valve to Exhaust Fitting-All
* 27 a	1	e	5101118	B107MLS	Mike Handle with Switch
* 27 b	1	e	5101112	BW107-MB	Mounting Bracket
28	1	s	5100713	B115C (99A)	Valve Kit: "0" Rg, Sprg & Wsh
31	1	s	5100812	B115VT	Valve Trigger, pins, washer
32	1	e	5101142	BW114HY-A	Hydraulic Mounting Block-WCR
34	1	s	5100712	B115C (99C)	Valve Repr Kit, comp intrnl pts
36	1	e	5100507	B114HYCONN	M/F Electrical Connector
37	2	e	5100638	B117D	Exhaust to Tube Fittings-All
38	1	e	5101050	BW107	WCR Handle
41	1	e	5100613	B114A-932	Diaphram for 9/32, 5/16, 3/8A
42	1	e	5100674	B121-932	Cylinder Spring-9/32, 5/16
43	1	e	5100690	BW135	Urethane Block
44	1	e	5101072	BW105-3/8	Plunger Rod for WCR
45	1	e	5100630	B114B-932	Steel Cover-9/32, 5/16, 3/8A
46	1	e	5100636	B117B	Cannister to Tube Fitting-All
* 47 a	2	s		B114DRC-932	2/10 Bolt Clamp / Bolts & Nuts
* 47 b	30	s		B114DRC-NB	30pc Clamp Bolt, Nut, Washer Set
50	1	e		B136-932-X	Safety Strap-Type 36 Service
* DENOTES MUTIPLE OPTIONS					





## B120 MINOR REPAIR KITS END USER PRICE LIST

B120 3/8HYKIT			B120 3/8KIT			BW120 PN KIT			B120 9/32/5/16 KIT		
MINOR REPAIR KIT WRI HYD 3/8 HD			MINOR REPAIR KIT WRI ROTO 3/8 HD			MINOR REPAIR KIT WCR 3/8 - 932			MINOR REPAIR KIT WRI 5/16 HD		
PART #	QTY		PART#	QTY		PART #	QTY		PART #	QTY	
B100A HD	4		B100A HD	4		B100A	4		B100A HD	4	
B102 HD	2		B102 HD	2		BW102	2		B102 HD	2	
B110 HD	2		B110 HD	2		BW110	2		B110 HD	2	
B111	2		B111	2		BW111	2		B111	2	
B112	4		B112	4		BW131-A	1		B112	4	
B107HY R/S	2		B115 (99A)	1		BW131-B	1		B114A-932	1	
B131-B	2		B131-B	2		BW135	1		B121-932	1	
B132-A	1		B132-A	1		B114A-932	1		B115C (99A)	1	
B132-B	1		B132-B	1		B120	1		B131-B	2	
B120	1		B134-A	1		B100C SC	2		B132-A	1	
B100C SC	1		B135-38	1		BW131-C	1		B132-B	1	
			B121-38	1					B134-A	1	
			B120	1					B135-932	1	
			B100C SC	1					B120	1	
									B100C SC	1	
BW120 H/Y KIT											
MINOR REPAIR KIT WRC HYD 3/8											
PART #	QTY										
B100A	4										
BW102	2										
BW110	2										
BW111	2										
BW131-A	1										
BW131-B	1										
B120	1										
B100C SC	2										
BW131-C	1										